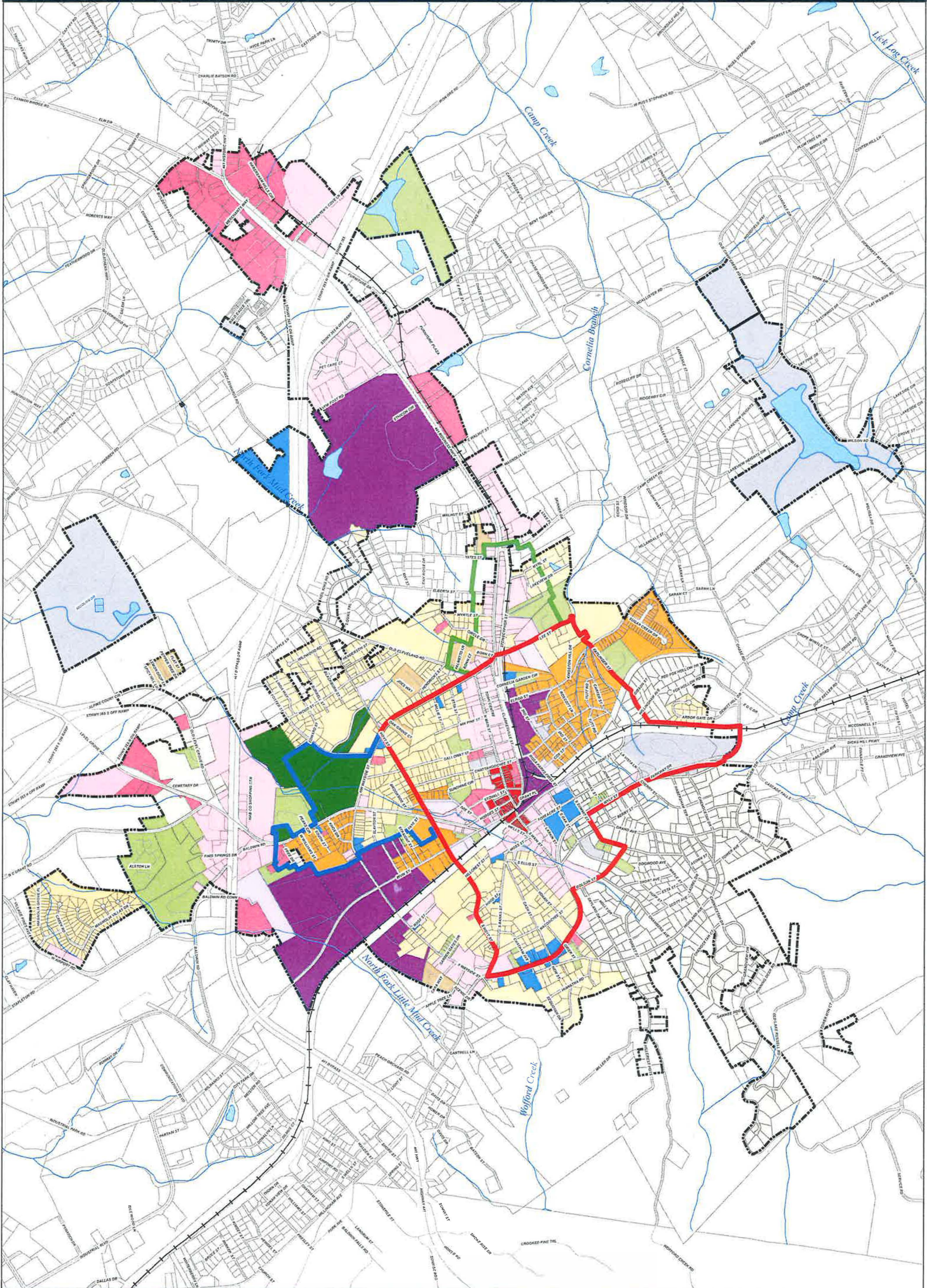


Official Zoning Map of the City of Cornelia



ADOPTED: July, 1994
 READOPTED: August 7, 2018

This is to certify that this is the Official Zoning Map referred to in Article 1 of the Zoning Ordinance of the City of Cornelia, Georgia.
 James C. Irby, Jr., Mayor
 James R. Henderson, Clerk

Amendments included through January 6, 2019

Legend

- | | | | |
|------------------------------|--------------------------------|---------------------------------|--------------------------------|
| Overlay Districts | Downtown | Zoning Districts | O.P., Office Professional |
| Lowland Drive | North Main | MOP, Municipal Owned Properties | B-1, Neighborhood Business |
| Lakes and Ponds | Streams and Rivers | R-1, Single Family Residential | B-2, General Business |
| Railroad | City Limits | R-1A, Single Family Residential | CBD, Central Business District |
| Hikerham County Roads - 2018 | Hikerham County Parcels - 2018 | R-1B, Single Family Residential | LI, Light Industrial |
| | | R-2, Multi Family Residential | NI, Heavy Industrial |
| | | MHP, Mobile Home Park | A, Agricultural |



0 395 790 1,580 2,370 Feet